

Valentine & Springtime Make-it & Take-it

*a crafts program for 1st & 2nd graders
assisted by their adult (or older teen) caregivers*

*Join Mrs. Reasoner for three hours of fun
creating Valentine's Day and spring season handicrafts*

Saturday, February 11th, from 1 p.m. to 4 p.m.

Held in Meeting Room A on the lower level of the library

Brochure with more information available at the Circulation Desk

Registration Information

- Due to space considerations and materials availability, registration is limited to twelve first and second graders accompanied by their adult (or older teen) caregivers.
- Call 423-2238 or stop at the Reference Desk during library hours to register.
- Registration begins January 23rd

Participation Guidelines

Each 1st or 2nd grader must be accompanied by an adult (or older teen) caregiver who will assist with creating the crafts.

A VARIETY OF VALENTINE CRAFT PROJECTS WILL BE AVAILABLE

- ♥ Tissue Paper Heart
- ♥ Valentine Flower Bouquet
- ♥ Ladybug Valentine Tic-Tac-Toe
- ♥ Bear Hug Valentine Card
- ♥ Choo Choo Train Valentine Box
- ♥ Love Bears All Things Bookmark
- ♥ Giant Mosaic Sticker Valentine
- ♥ Bejeweled Valentine Box
- ♥ Hearts
 - Assorted Sizes & Colors
 - Smiley Heart Faces
 - Red & White Lace Heart Doilies
- ♥ Sweetheart Bears Door Hanger
- ♥ Valentine Inchworm

OTHER CRAFT PROJECTS

- ♥ Flowerpot Polar Bear
- ♥ Penguin Door Knob Hanger
- ♥ Shamrock Sticker Tree
- ♥ EduCraft™ Kaleidoscope
- ♥ Mosaic Pencil Cup
- ♥ St. Pat's Charm Bracelet
- ♥ Easter Egg Magnet
- ♥ Bunny Door Hanger
- ♥ Magic Color Scratch Shamrocks
- ♥ Shamrock Wreath
- ♥ Magic Color Scratch Mask
- ♥ Mardi Gras Jester Hat
- ♥ Leprechaun Magnet

CRAFTS INVOLVE:

- ♥ Coloring
- ♥ Cutting
- ♥ Pasting
- ♥ Assembling
- ♥ Threading
- ♥ Sorting
- ♥ Designing

PREVIEW OF CRAFT PROJECTS

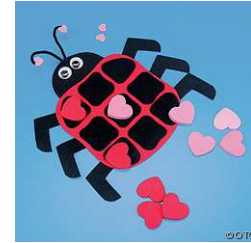
Tissue Paper Heart



Valentine Flower Bouquet



Ladybug Valentine Tic-Tac-Toe



Bear Hug Valentine



Choo Choo Train Valentine Box



Love Bears All Things Bookmark



Giant Mosaic Sticker Valentine



Bejeweled Valentine Box



Hearts
• Assorted Sizes & Colors
• Smiley Heart Faces
• Red & White Lace



Sweetheart Bears Door Hanger



Valentine Inchworm



Flowerpot Polar Bear



PREVIEW OF CRAFT PROJECTS

Penguin Door Knob Hanger



Shamrock Sticker Tree



EduCraft™ Kaleidoscope



Mosaic Pencil Cup



St. Pat's Charm Bracelet



Easter Egg Magnet



Bunny Door Hanger



Magic Color Scratch Shamrocks



Shamrock Wreath



Magic Color Scratch Mask



Mardi Gras Jester Hat



Leprechaun Magnet

